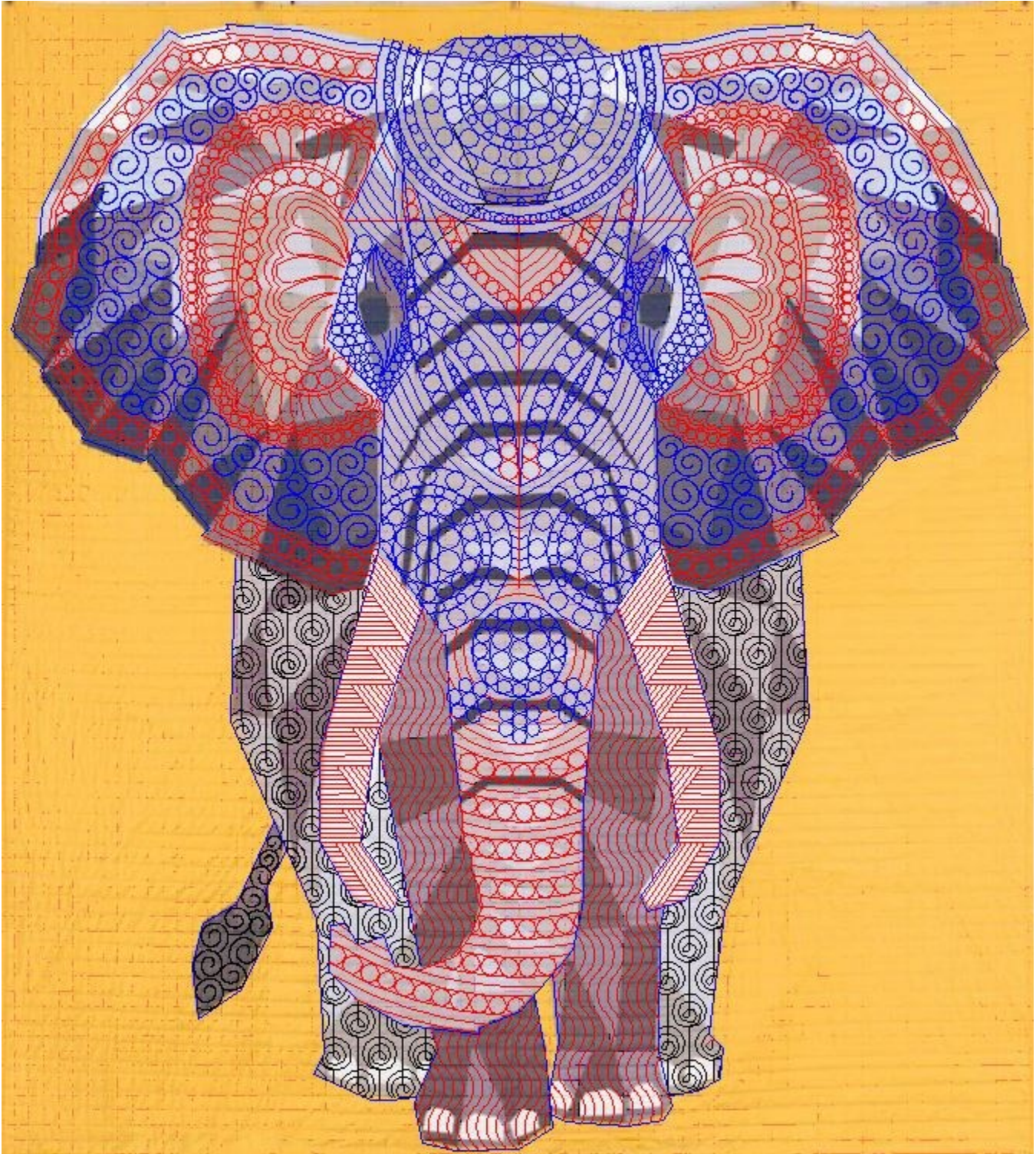


Pattern Layout for Violet Craft's Elephant Abstractions



Info/Tips for Violet Craft's Elephant Abstractions Quilt Patterns

Things to Understand Before You Load Your Quilt

- 1) You will need to load the quilt landscape. Why? If you load the quilt portrait, you won't be able to quilt many of the patterns, as they will exceed the area between your belly bar and the take up roller.
- 2) Depending on the throat space of YOUR longarm, you may still not be able to use these patterns. You **MUST** have the ability to quilt a minimum of 19". If you machine cannot quilt a pattern of 19" in height, you cannot use these patterns.
- 3) You will either use the "Violet Ear" pattern or the "Violet Ear Parts 1 & 2" patterns, but not all three.
- 4) The "Violet Leg Fill 001 and 002" patterns were the original patterns created to quilt the elephant's legs. You are free to choose to use either or both. You will need to use an outside trim at the leg seam so that the quilting stays inside the leg section.
- 5) The "Violet Left Leg 001 & 002" and "Violet Right Left 001 & 002" were created for the individual who wished to quilt out these patterns as a whole cloth quilt, rather than quilting the pieced quilt. If you attempt to use them to quilt the pieced quilt, you may have difficulty making them line up (due to the vagaries of people's piecing).
- 6) Shrinkage amounts are impacted by a number of things (Stitches-per-inch, batting loft, the tautness of the quilt sandwich). We recommend that you employ all of the usual tricks to minimize shrinkage AND to closely monitor the patterns as they stitch in case you need to surf the quilt.
- 7) There are no patterns in the bundle for the background quilting. We suggest that use choose the edge-to-edge pattern of your choice and trim out the elephant. If you choose a linear e2e pattern, you may want to first load the quilt portrait, quilt that portion, and then flip the quilt landscape for the remainder.
- 8) The chart below details the pattern height/width information for the patterns in this bundle. Keep in mind that with the exception of the Violet Ear Part 1 & 2, when the quilt is loaded landscape, the pattern width will become the usable "height".

Pattern name	Height	Width
Violet Ear	28.42	18.6
Violet Ear Part 1	11.74	28.42
Violet Ear Part 2	9.84	21.08
Violet Left Leg 001	27.91	8.82
Violet Left Leg 002	28.21	10.62
Violet Right Leg 001	26.64	6.58
Violet Right Leg 002	27.79	7.73
Violet Eye	8.62	4.26
Violet Head	23.79	17.92
Violet Tail	8.97	4.51
Violet Trunk	33.7	17.03
Violet Tusk	18.46	5.22
Violet Leg Fill 001	33.67	11.82
Violet Leg Fill 002	35.79	11.34

Violet Ear Part 1



Violet Ear Part 2

