



# Club Notes: Peridot NOVEMBER 2022

Greetings Quilting!

This past couple of weeks, my husband decided that I needed to have a sewing room completely separate from where the Statlers live and run. So, he hauled out the family room furniture (which we haven't used in years), moved my sewing table, huge cutting table, and pressing table into the room. After he moved it all around a couple of times (to my satisfaction) he then started rewiring the ceiling for all of the LED lights. I now have an enormous sewing room (big enough for friends to come and play) with great lighting...AND he's going to make custom cabinets for under the cutting table and the pressing table for storage of project tubs. The ceiling mess has all been cleaned up and now I just have to find the time to work on a project.

Lots of cute Christmas patterns this month as well as another great pattern set for Elizabeth Hartman's Robot Quilt.

The November gift pattern (the one customers get when they make a purchase online) is the November Raw Edge Applique placemat, which you can quilt out and bind or quilt and let the pattern do the self-binding. There will be a new placemat each month.



I strongly recommend that you pre-wash your fabrics, as placemats tend to come into contact with food, so you'll want to be able to wash them. I also recommend that you use polyester batting for the same reason (you don't want them to shrink, either).

There's a stitch map included in this newsletter so you know which fabrics to lay down first and there are placemat instructions available at the SDQS website home page "Instructions and Guides" link.

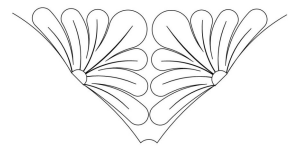
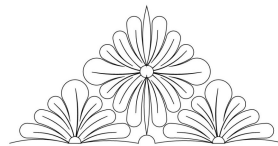
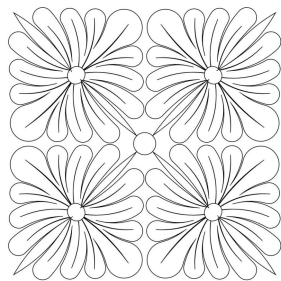
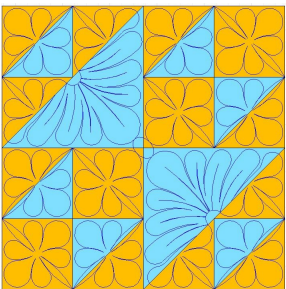
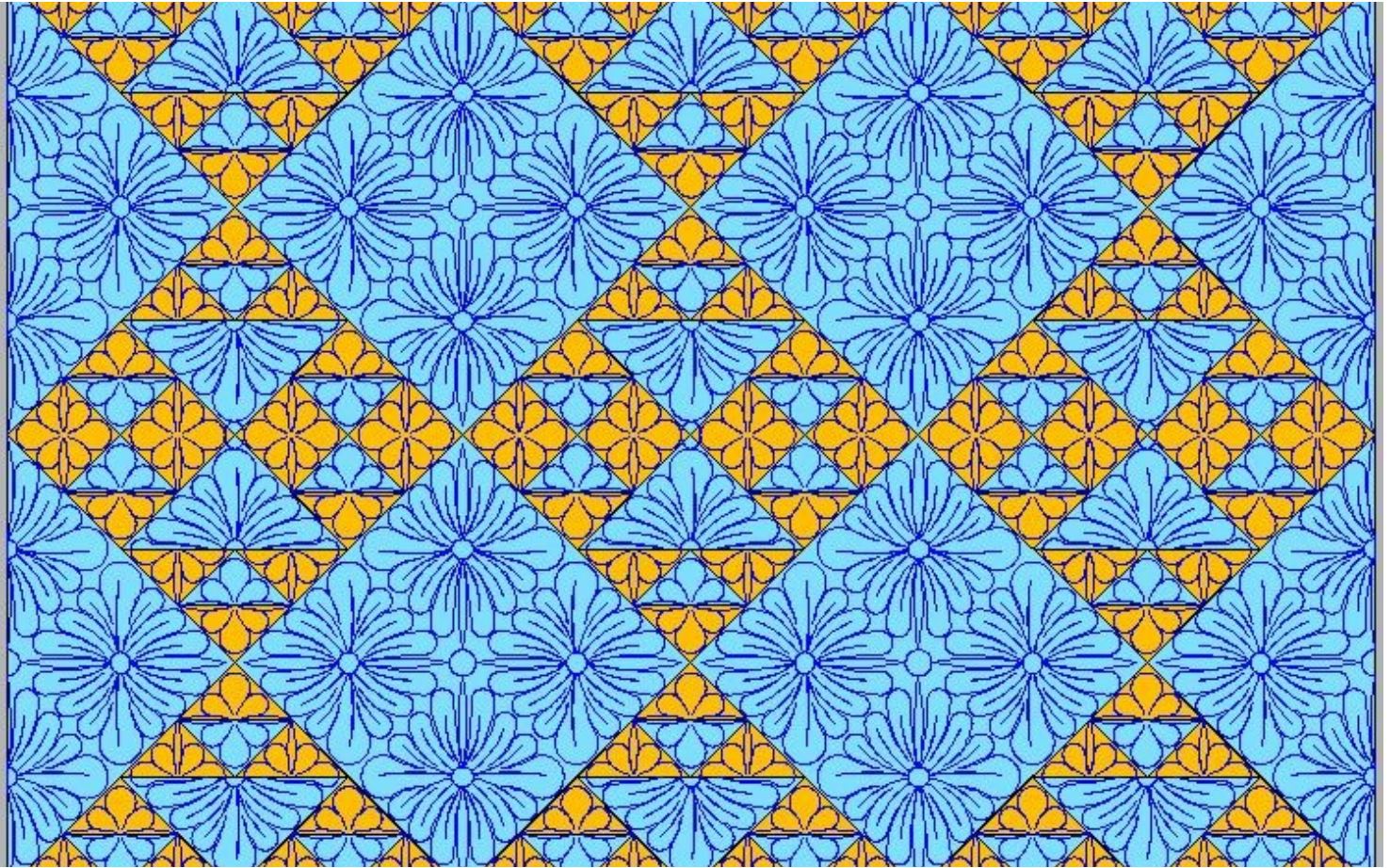
Enjoy the patterns!

Janet & Kim

**The Peridot November 2022 Archive contains 125 patterns,  
including 33 e2e patterns, a retail value of \$1415.00.**

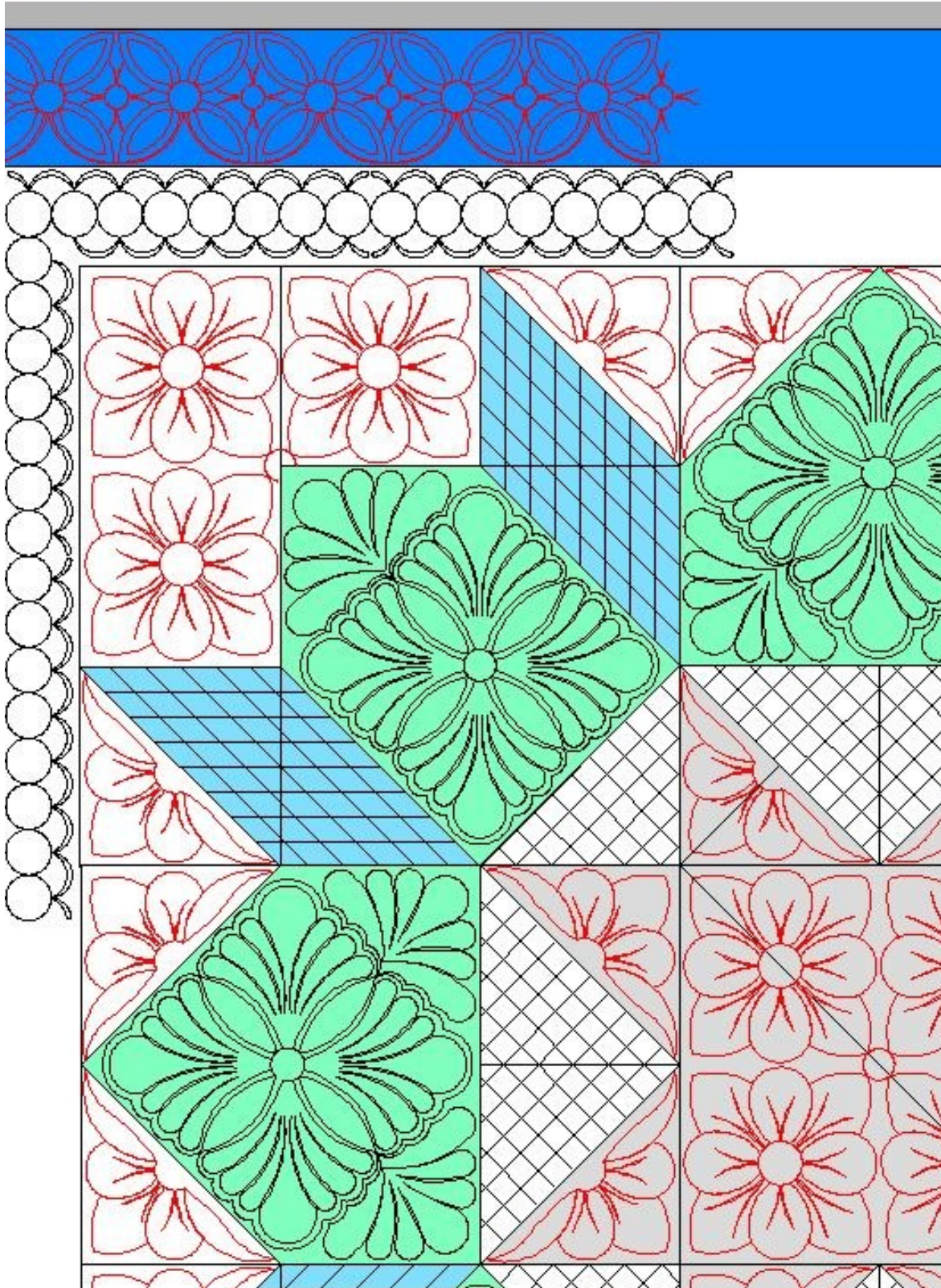


# The Lexie Patterns



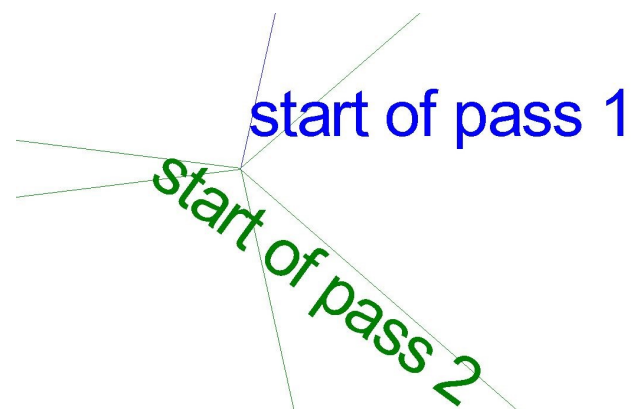
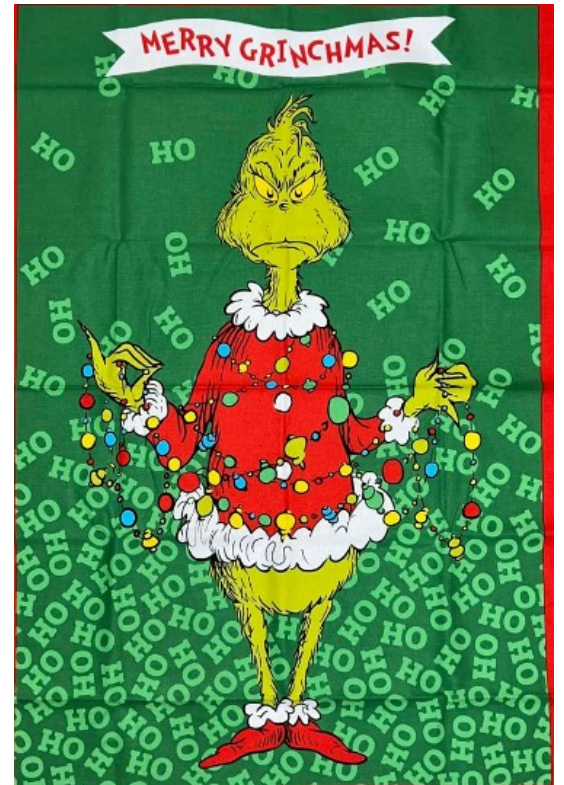
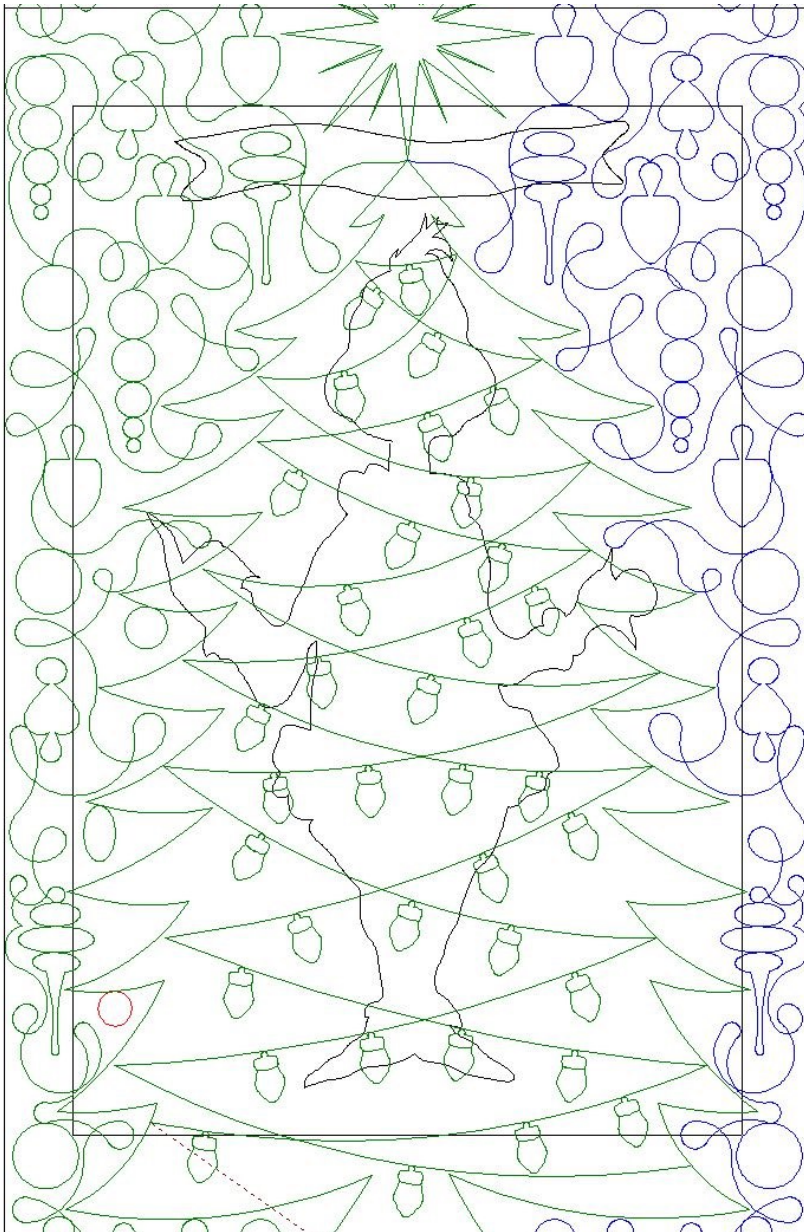


# Swoon Patterns (for Baby Quilt Size)



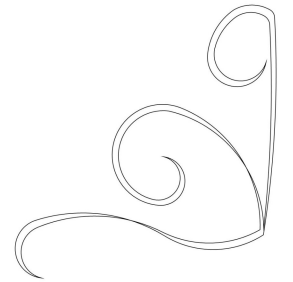
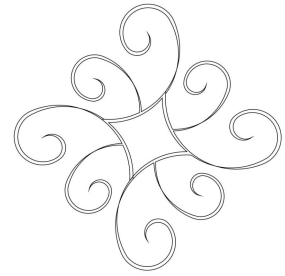
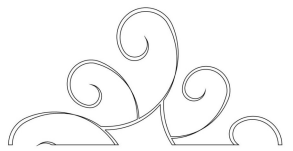
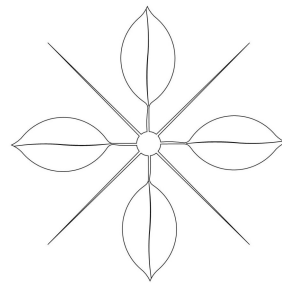
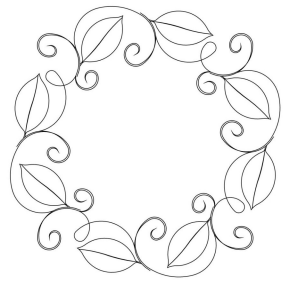
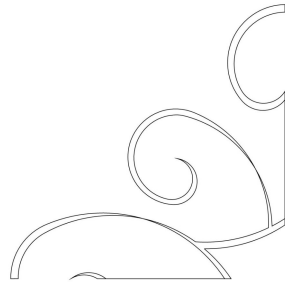
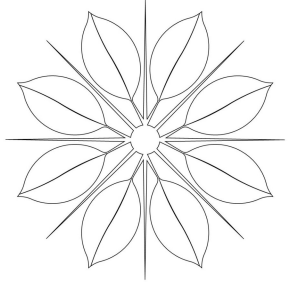
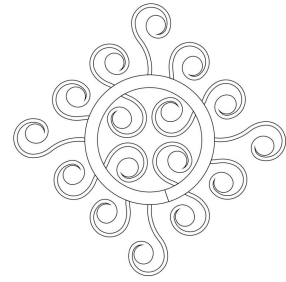
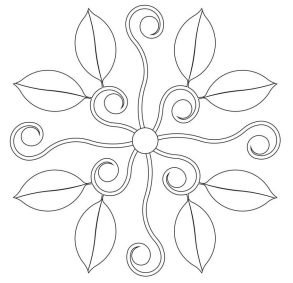
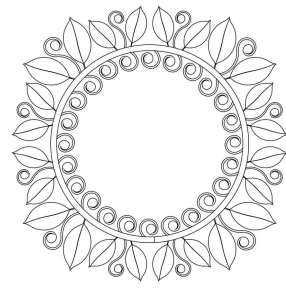
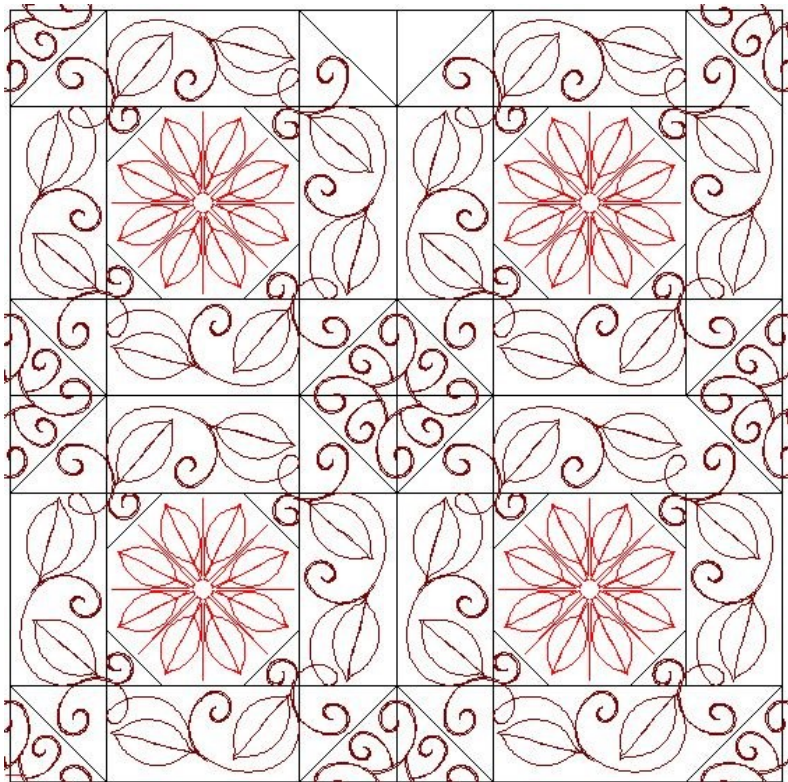
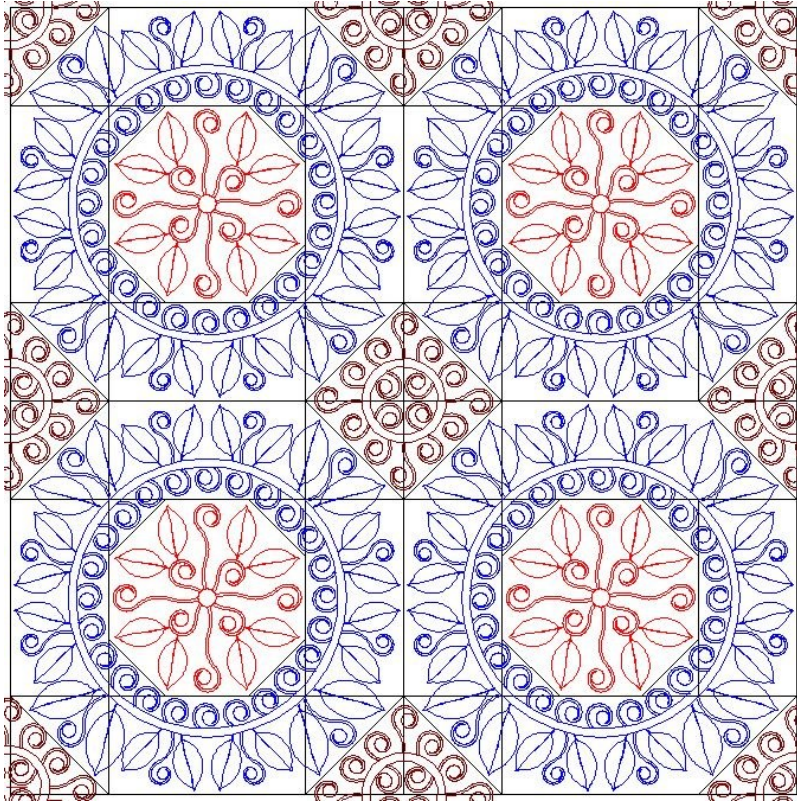


# Patterns for the Grinch Panel

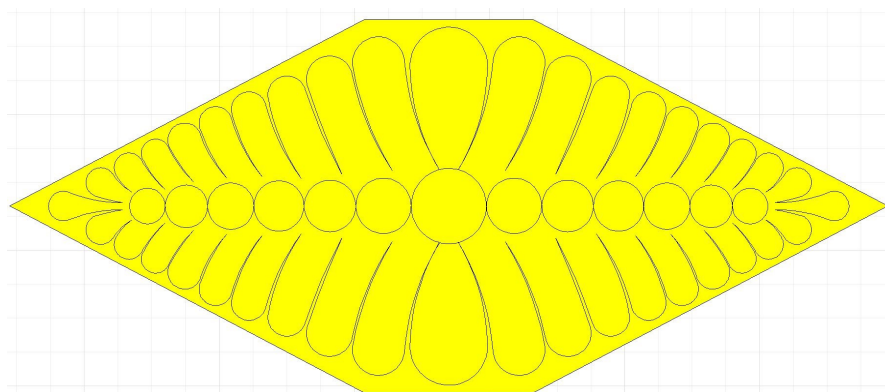
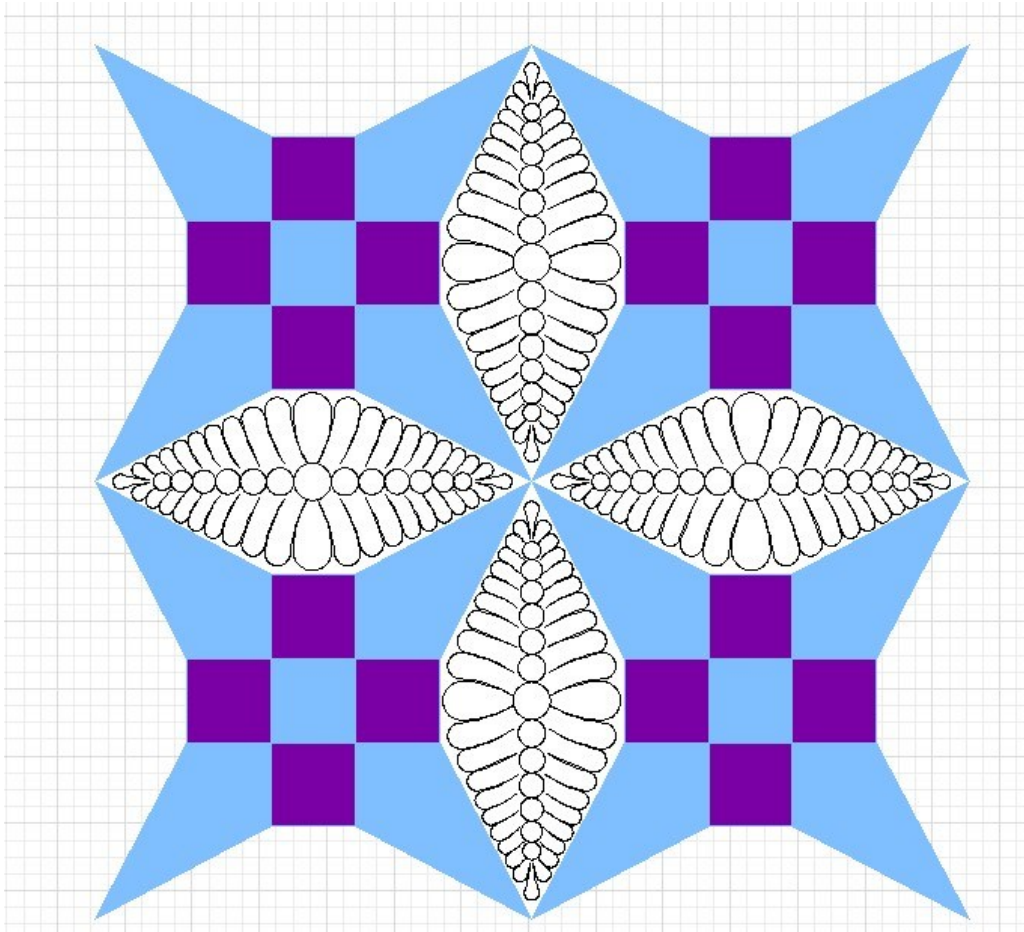




# The Octo Patterns



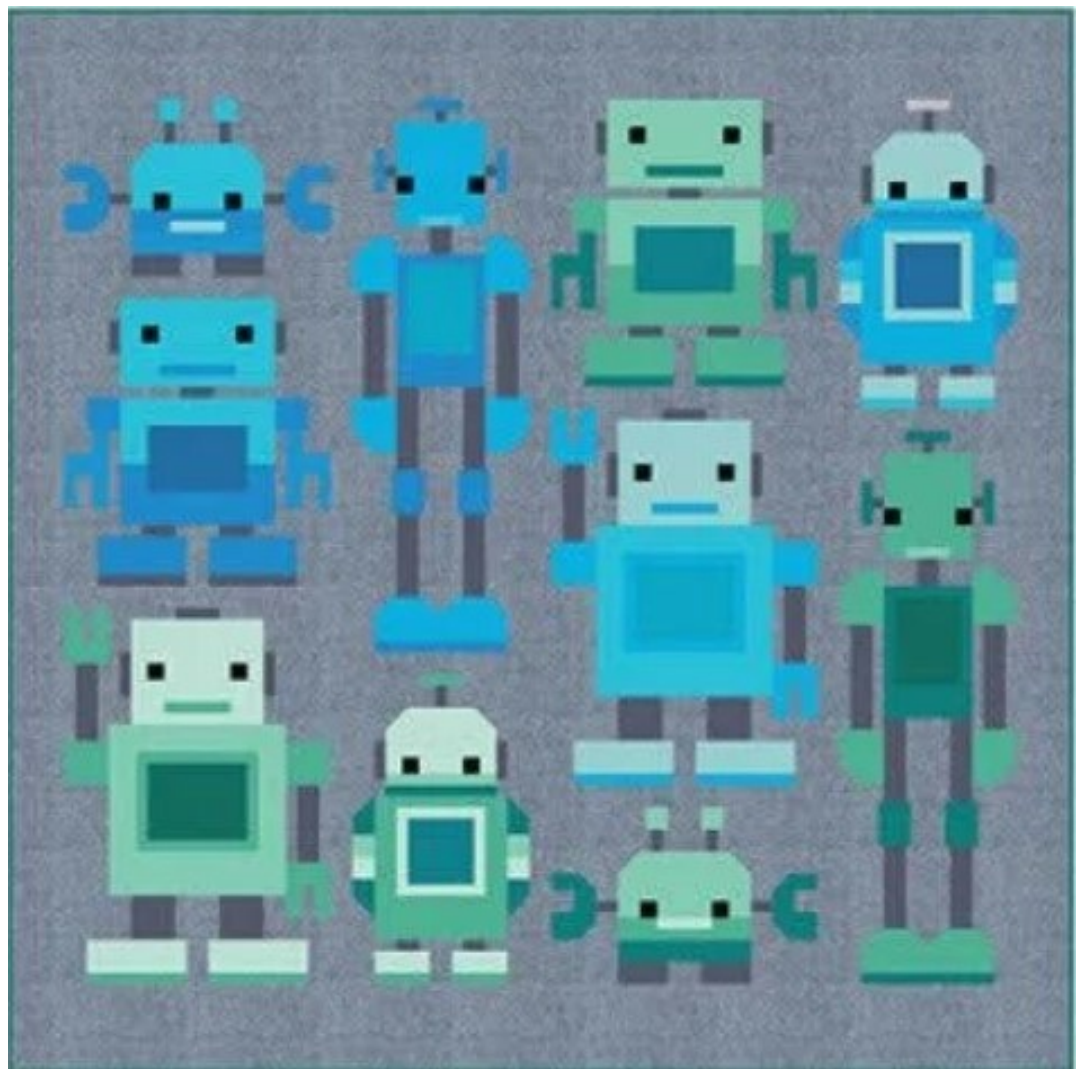
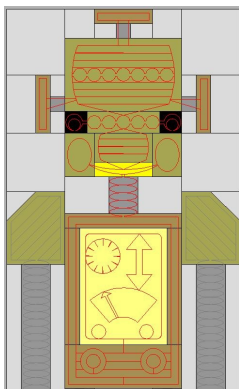
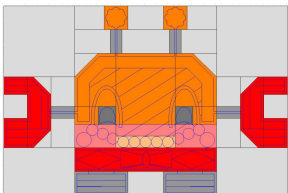
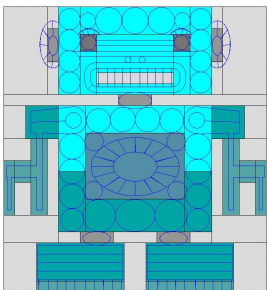
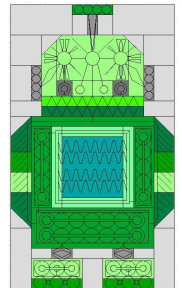
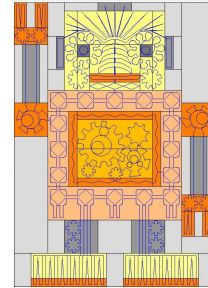
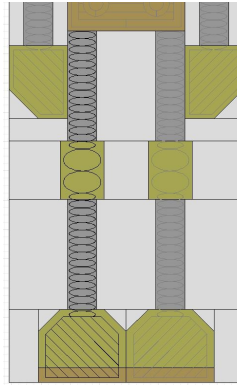
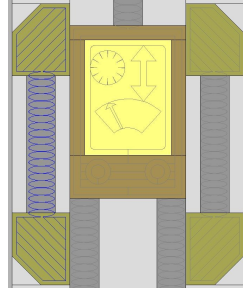
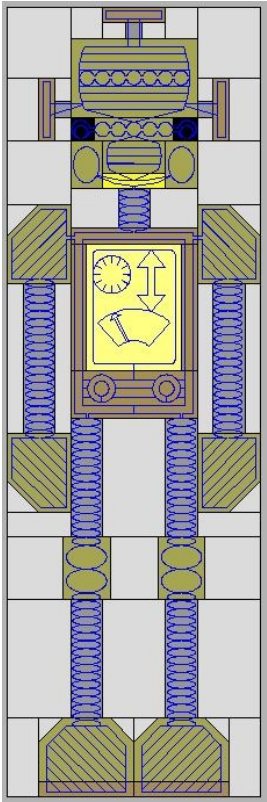
Nine Patch Star Melon 001  
(was designed to quilt the melon in THIS version of a Glorified  
Nine Patch)





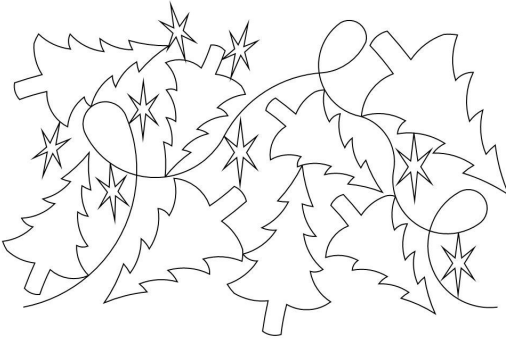
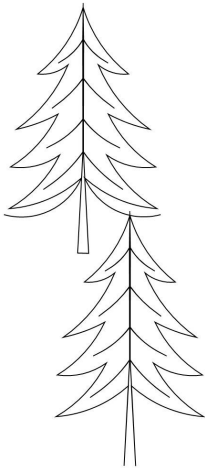
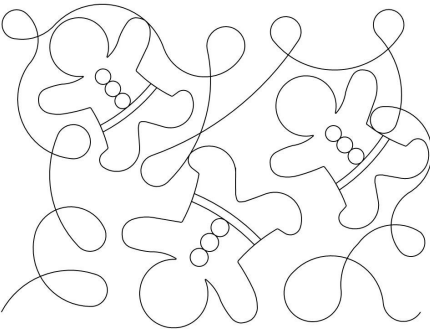
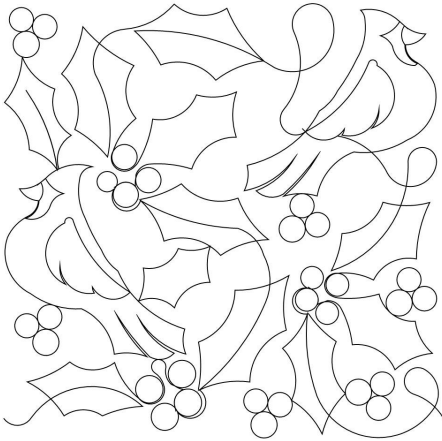
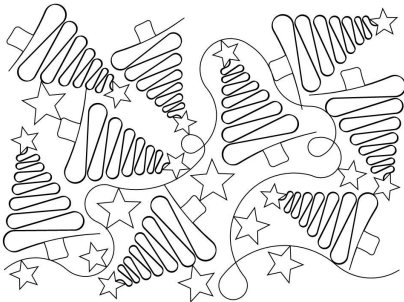
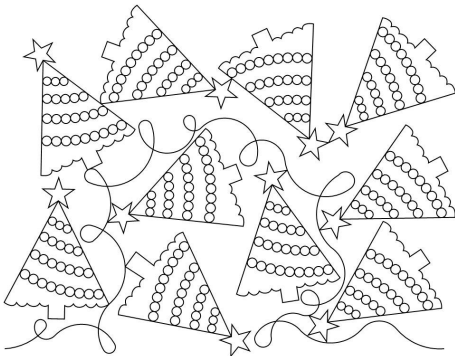
# Patterns for Robot Quilt

By Elizabeth Hartman

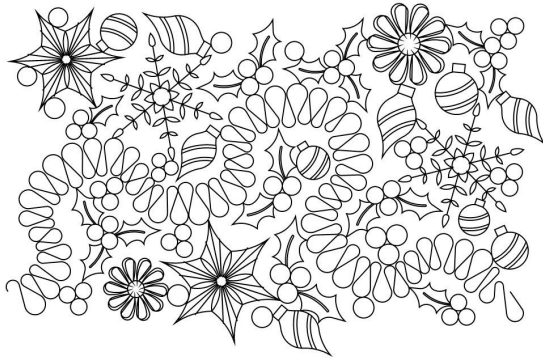


Use the e2e pattern of your choice to quilt the background fabric.

# Christmas/Winter E2E Patterns

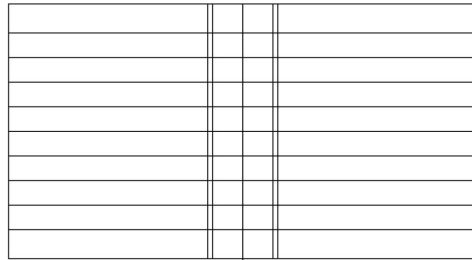
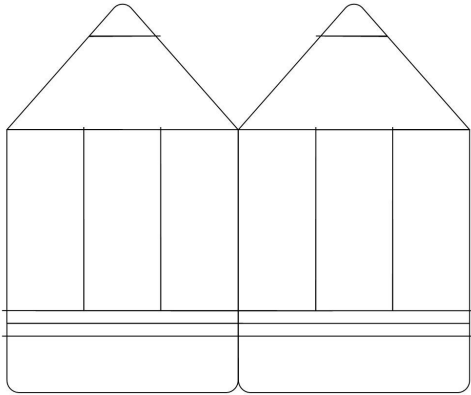






**This is my favorite!**

# Needle Keep





# ***The Name Panos...sigh!***

—I do my level best to talk my quilting customers OUT of stitching name panos on their quilts. Why? Because I think they almost always detract from the quilt itself AND you can't read the names from the back-side of the quilt. My personal quilting philosophy is to "do no harm" which means not quilting elaborate designs on a quilt just because I have a computer guided longarm which allows me to do so. Just because you CAN does not mean you SHOULD.

—Regardless, name panos are popular, especially around Christmas and Graduation seasons. Consequently, this archive contains more name panos than I would like. Most of them you will never have a use for, so just cull them out and forget about them. That's what I do...they don't make it onto my Statlers. If you need one, you can always ask me to send it to you again.

***—Almost every single name pano started out life as a "normal" pattern, to which we were requested to add a name. The original "normal" pattern is probably NOT included in the current archive, as it was created at some time in the past. That's one reason why CJC members get a 20% discount on all online pattern purchases.***

—From time to time we poll our Crown Jewels Club members and ask them if they'd like us to delete all those name panos from the archive. As Crown Jewels Club members, you pay the \$50.00 monthly fee and get EVERYTHING Kim draws...including the name panos, and apparently, you want them all. Very few people (much to my surprise) voted to have them culled out prior to release.

## **Statler Owners Upgrading to Creative Studio 7.3 and 7.5 (please read)**

Plan your software upgrade! If you have quilts to run and cannot afford any downtime, wait until your quilt load eases up before uploading.

Some people have had better luck downloading the software to a usb stick and upgrading their Statler and their Stand Alone Mode computers from the usb stick, rather than opening the Creative Studio software and then letting it upgrade from that point.

Statler Owners: If you're using CS 7.5.4 are your encrypted patterns suddenly have a dark gold background (instead of light yellow), LOG OUT of your Creative Studio Cloud Database. Reboot your Creative Studio software and then log back into your CS Cloud Database. Your patterns should then be light yellow (which means that they will stitch). If you still have problems, sync your patterns to your Gammill Pattern Cloud Account.

If you upgrade to Statler's Ascend, Gammill will make all of your patterns (in your Gammill Pattern Cloud Account) work with your new system, but you will need to contact SDQS with your new Statler Gold Key number.

### **Statler Technical Support**

417-256-5919 ext. 1 / StatlerSupport@gammill.com

## December placemat 001



### Stitch Map

Defining area stitching lines

Background quilting

Face

Face quilting

Right eye

Left eye

Beard

Beard quilting

Tongue

Mustache

Mustache quilting

Nose

Nose quilting

Red hat

Hat quilting

Hat fur

Fur quilting

Jingle bell

Lay down backing fabric, right side down

Stitch turning line.



## General instructions for Self-binding Placemats from Sweet Dreams Quilt Studio

Fabric: You will need plain muslin, the front fabric, the backing fabric and fabric for all the applique pieces.

You will also need batting and fusible web such as heat and Bond lite, and matching threads.

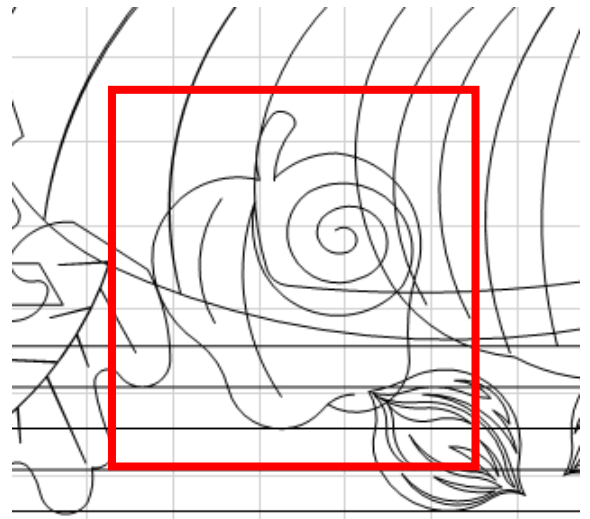
You will load the muslin on your longarm and then layer on the batting, and the front fabric (right side up) for the placemat. If you are floating your top fabric, you will need to pin it down, being sure to keep your pins outside the stitching area.

On your system, set your default stitches per inch to 14. Set your machine to pause at jump stitches.

Load your pattern on your system. Place it on the CAD screen and look at each applique piece. You can get a general idea of how big you need to cut your applique fabrics by putting on the 1-inch grid and just counting the inches. For the apple I'd cut a 5" square.

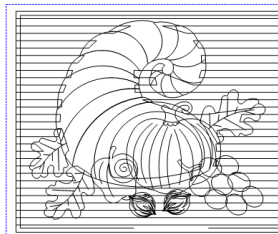
Cut out all your fabric and put fusible web on the back side of each piece. Then remove the backing paper. Do this for all the applique pieces.

Now you are ready to begin stitching.



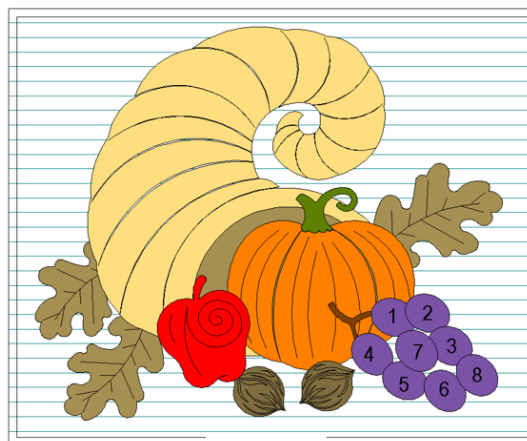
Draw a boundary, showing your quilting space then move the placemat pattern into place.

Then first thing to stitch is the outside lines around the placemat. Once this is stitched you can remove any pins that might be in the way.



According to the Stitch Map, the next thing to stitch is the background lines. You will want to have thread that matches the background.

When the background lines are done, the stitch map says we will stitch the oak leaf on the top left. Change your thread to match the oak leaf material. Lay your prepared fabric (fabric that has fusible attached, and the paper removed) down, and use your cross-hairs to check that the entire area that will be appliquéd is covered with the fabric, now stitch.



Stitch map

define stitching area lines  
background quilting  
oak leaf top left  
oak leaf bottom left  
oak leaf right  
cornacoppia  
cornacoppia mouth  
pumpkin  
pumpkin quilting  
pumpkin stem  
apple  
apple quilting  
left walnut  
right walnut  
grape stem  
grapes 1 thru 8  
turn line quilting if not binding

Once that is done, move the head out of the way and trim away the excess fabric. Use small, sharp, curved blade scissors. Trim carefully but as close to the edge of the stitching as possible. To get into small areas you may need to use a pair of tweezers to help grab the excess fabric for trimming.

Look at the stitch map to see what is going to be stitched next and continue laying down the fabric and stitching out the applique pieces.

After all the grapes are done, the machine will pause to let you put on your backing fabric. Put the backing fabric, right side down, over the placemat and make sure it covers that outside stitching line. You might want to put in a few pins to keep the fabric from bunching or shifting. It is going to stitch around a quarter of an inch inside the outside stitching line so be sure any pins aren't in that area.

Once it is done, remove from longarm or continue making placemats until you have them all stitched.

Once your placemats are off the longarm you will trim around the place mat, clip the corners and turn it right side out.

Now move immediately to a pressing surface. Give the entire placemat a good pressing. **NOTICE** I said, pressing, not ironing. Lift the iron up and down, making sure all the edges are well fused down.

You will need to close the turning hole by hand. I also stitch about 3/8" from the edge on my domestic machine to simulate binding.

If you want to bind the placemat instead of turning it, you will need to load your backing fabric first on your long arm instead of muslin and stop when you've finished the applique (don't let it stitch the turning lines of quilting).

Now trim and bind. Your quilt is ready for use.