

Basic Christmas Stocking Instructions

Load muslin, batting and the stocking fabric (right side up) onto the longarm. The stocking fabric will be the fabric that will become the front of the stocking. I like to make big stockings, so I generally use 58"-60" wide fabric, flannel-backed cotton is great. You can reduce the size of the stockings if you want it to fit on a 42"-44" wide fabric. This stocking is self-facing so you will need backing material that will ultimately become the back of the stocking.

Set your machine to stop at jump stitches.

Set the SPI (Stitches per Inch) for the project to 14.

Select a Christmas stocking pattern:

Christmas 2024 holly swirl stocking 001 (quilted cuff)

Or **Christmas 2024 holly swirl stocking 002 (blank cuff)**

To add a name to the blank cuff:

Create the name you want to add to the stocking. You will position the name in the proper place on the stocking.

Position the stocking pattern on your system and move the name into place on the screen. Now stitch the name.

Now start stitching the stocking pattern. The pattern will stitch the outer outline first. It then will stitch the outline of the cuff and then move to the quilting on the stocking. When it finishes the quilting portion, it will move to the opening on the right end of the stocking. When it stops for the jump stitch, you should place the backing fabric, right side down, and cover the entire stitched stocking. When you restart, it will stitch the inner outline.



Remove the stocking from your machine. Lay your stocking on your work surface with the back (backing side) up. You can see the outside edge from the side.

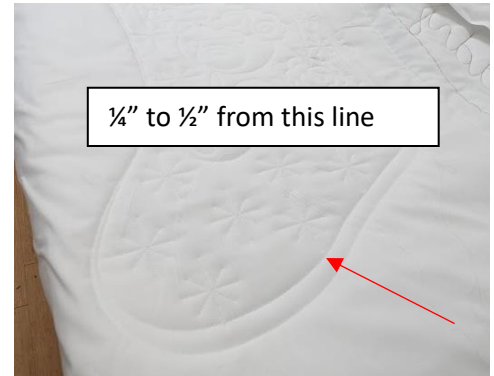


Cut out the stocking trying to stay about ¼ to ½ an inch away from the inside outline.

At the turning hole I like to cut a wider margin. It makes it easier to tuck in and close the opening.



Clip the curves.



Stick your hand down into the stocking through the turning hole. Go to the other end and grab the toe of the stocking and pull, continue pulling until the entire stocking turns right side out.



Using your hand make sure you get all the edges pushed out.



Tuck in tab and stitch opening closed.



Take the unquilted side of the stocking and stuff it into the quilted side. This makes the stocking.



The front and the back. I usually top stitch around the top with my domestic machine and add a loop.