

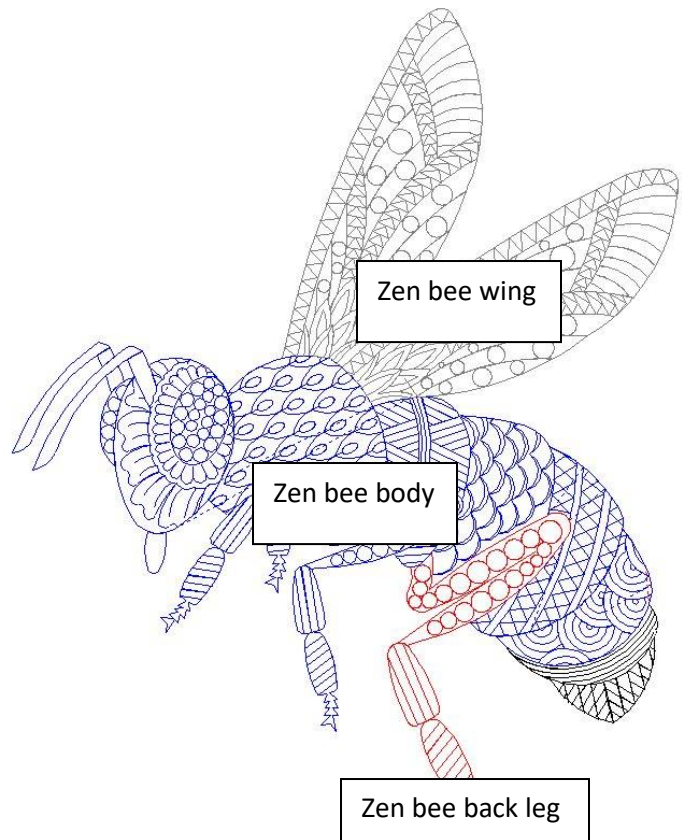
Instructions for Zen Bee

The finished bee is 32" wide and 40" tall so it needs to be sewn in 3 passes.

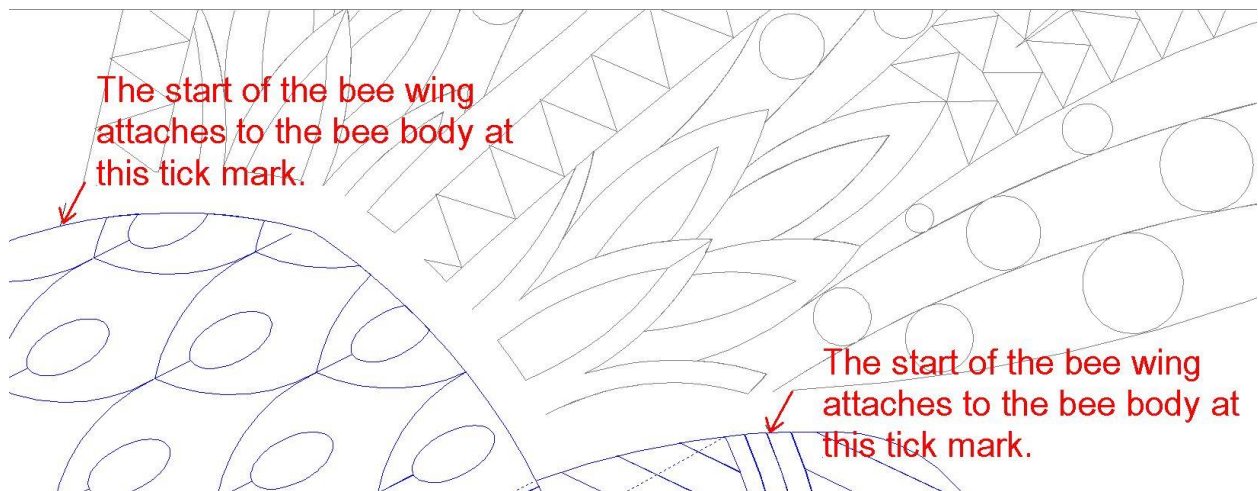
Put all 3 patterns onto your CAD screen at the same time and line up.

If you are going to make any changes to size and or rotation you will want to adjust all 3 patterns at the same time.

I would stitch out the zen bee body first.



When it is done stitching roll your quilt back and move the zen wing pattern so that the ends match the tick marks that were stitched on the bee. Make sure you are matching the pattern to the stitched pattern not the CAD screen.



When it is done stitching roll your quilt forward and move the zen back leg pattern so that the ends match the tick marks that were stitched on the bee. Make sure you are matching the pattern to the stitched pattern not the CAD screen.

