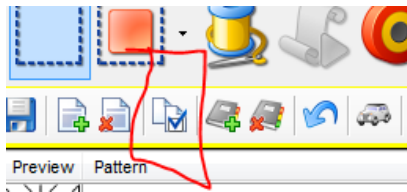


Lone Star WholeCloth Stitch out Instructions

In this case we are going to use a pattern set from Sweet Dreams called “WholeCloth Lonestar” There are 4 patterns for this quilt.

Note: As designed the quilt will be 54” inches square. At 54” the tallest pass is 16.21”. If you have 18” of throat space you can make a 60” square quilt. It is the amount of throat space that controls how large a pass you can make. If you wanted to make a larger quilt the patterns would need to be redrawn into smaller bits.

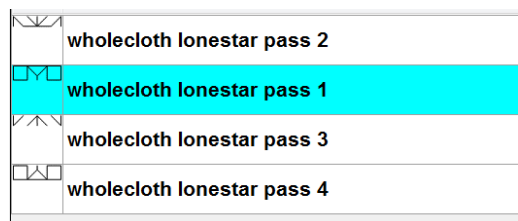
Click on the Project Property box.



Change the default Stitches per Inch to 4

Project Properties	
Project Name	My Quilt Project
Stitches Per Inch	4
Stitching Speed	65
Tie Stitches Per Inch	43
Tie Stitches	7
Margin	0.25
Project Notes	
Customer	*****
Stitch Count	0

Load the 4 WholeCloth lone star pass



patterns into CS.

- Click on each pass of the lone star patterns and place them on the screen using repeat pattern.
- Once they are all on the screen move them around until you have all four passes lined up as close as you can get. Determine the size you want the entire quilt to be stitched at. Default: 54”, 60” or smaller.
- Select all 4 patterns on the screen (ctrl a).

In the pink bordered box (selected pattern Properties), you can adjust all the patterns at the same time. Make sure that “freeze aspect” is on. Change either the width or the height to the desired measurement. Remember the amount of throat space you have determines how big your quilt can be. You can click on the first pass and see how big that pattern is. As long as the height of that pass is smaller than your max throat space you are good. If it is too big, select all the patterns again. Reduce the size, select pass 1 and check its measurements. Continue until your pattern fits your throat space.

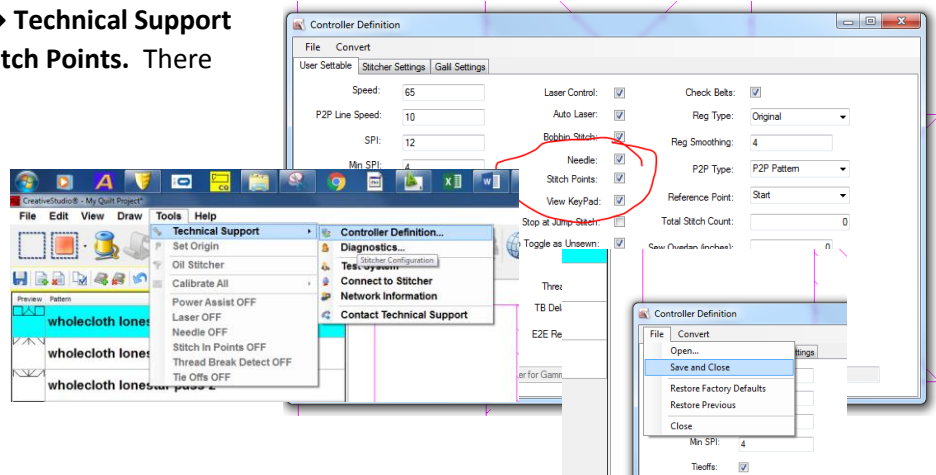
Selected Pattern Properties	
Stitches Per Inch	14
Pattern Speed	65
Tie Stitches Per Inch	43
Tie Stitches	7
Selected Pattern Width	60
Selected Pattern Height	59.99
Freeze Aspect	On
Selected Pattern Rotation	0
Designer Notes	THIS PATTERN IS COPYRIG

- Load your backing, batting, and front fabric.
- Baste around the outside edges.
- Put the cross hairs in the upper left corner where you want the upper left corner of the quilt to be.
- Select all the patterns (ctrl a).
- Now move all those pattern into place with the upper left corner of the patterns lined up to the cross hairs.

- Move your Statler over to where the upper right corner shows on the screen and verify that you have enough room to stitch the pass across, then check the bottom and make sure there is enough room there as well.
- Put on thread and new bobbin. I find it easier to stitch out the outline in a contrasting thread.
- Turn on Stitch in Points.

To turn on Stitch in Points: go to **Tools → Technical Support → Controller Definition...** and click on **Stitch Points**. There should now be a check mark in box.

Click **File → Save and Close**



- Select passes 2-4 and right click and mark them a sewn.
 - Click **Quilt** and stitch out the first pass.
1. Roll the quilt keeping the bottom 4" or so of the first pass accessible.
 2. Select all the patterns on the screen (ctrl a), right click on patterns and select **Relocate → All to 2 points**
 3. On the CAD screen click the bottom of the left edge of the pattern then the bottom of the right edge
 4. Now on the quilt click the matching points, bottom left then bottom right.
 5. Toggle the 2nd pass unsewn
 6. Your quilt may or may not have shrunk. I found mine didn't really move.
 7. Put your cross hair on the bottom left edge of the 1st pass and make sure that the top of the left side 2nd pass matches up.
 8. Now move your cross hairs over to the bottom of the right side of the 1st pass. Look on the CAD screen and make sure that the top of the right side of the 2nd pass lines up. If not, you may have to adjust the 2nd pass so these points will line up. If you move 1 side, go back and verify that the other side still lines up.
 9. When you have it all lined up, click **Quilt**.

Repeat steps 1-9 for each pass. Don't worry overly much if everything doesn't line up exactly. This is the beauty of the basting in method. These are just guidelines and will be removed so no one will know that something didn't line up perfectly.

We have one more task to complete before placing our patterns into our grid. We need to put in the smaller diamonds that fill the large diamonds. We will be using p2p lines to do this. You can just start putting in the p2p lines from the bottom up. You don't need to roll the quilt back to the top.

On your quilt top, using the Statler, **click P2P** and make sure it is set to line, not pattern. In this example I only want 1 ring of small diamonds so that is what this diagram shows you.

This is all that I can stitch in a single pass.

- Click **Quilt** and stitch out the p2p lines.
- Roll the quilt and finish quilting in all the p2p lines that you need.

If you were doing all the small diamonds in the large diamond I would place all the lines going one direction, stitch them out, and then place the lines going the other direction to account for shrinkage.

Here is what the quilt top should look like when you are done putting in the grid.

Now you will quilt the quilt the same as you would quilt any other custom quilt. You will click boundaries and then place patterns into the boundaries. This is how to account for the shrinkage that is bound to occur.

